

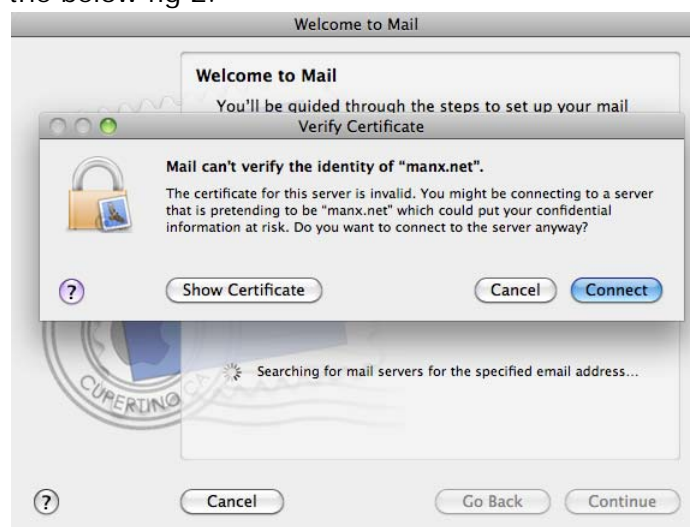
# Setting up Apple Mail for Mac OS-X 10.6.x (Snow Leopard) with Manxnet Mail

## Setting up the account

- Open your Mail program by clicking the Mail icon in the Dock.
- If this is your first time using Mail you will see the below screen straight away. If you are simply adding your new Manxnet Mail address then click **Mail**, select **Preferences**, select the **Accounts** tab, and click the [+] symbol toward the bottom left of the dialog box. Once the below screen is visible, enter the below details:
  - **Full Name:** Enter your name in this field, the name you enter here will be shown in the inbox of people you send emails to
  - **Email Address:** Enter your email address here
  - **Password:** It is not necessary to enter your password at this time.



- When you click Continue, the program will attempt to discover your email account on the Manxnet Mail server, and a warning will likely appear regarding a secure certificate as the below fig 2.



- Click on **Connect** when you see this.



- The Incoming Mail Server screen tells your Mail program the address of the server that receives your Manxnet Mail; fill out the details as follows:
  - **Account Type:** POP
  - **Description:** Enter a name for this account; in the example above we've called this 'Manxnet Mail'
  - **Incoming Mail Server:** mailin.manx.net
  - **Username:** Enter the first part of your e-mail address without the @manx.net – in our example we are using the e-mail address username@manx.net therefore our username is 'username'
  - **Password:** (leave this blank on this occasion, this is to ensure the correct security settings are setup in the next screen).
- Once you have filled in the information, click **Continue**. A prompt will appear indicating that the password is incorrect. Ignore this for the time being by simply clicking on **Continue** a second time, and this will then proceed to the next screen.



- On the above screen untick the box that indicates to use SSL, ensure that the authentication is set to password and click **Continue**



- The Outgoing Mail Server screen tells your Mail program the address of the server that sends your Manxnet Mail; fill out the details as follows:
  - **Description:** Manxnet Outgoing Mail
  - Tick the box marked **Use only this server**
  - **Outgoing Mail Server:** mailout.manx.net
  - Tick the box marked **Use Authentication**
  - **Username:** Enter your e-mail username as we entered in the previous screen
  - **Password:** (leave this blank on this occasion; this is to ensure the correct security settings are setup in the next screen).
- Once you have filled in the information, click Continue. A prompt will appear indicating that the password is incorrect. Ignore this for the time being by simply clicking on Continue a second time, and this will then proceed to the next screen.



- On the above screen untick the box that indicates to use SSL, ensure that the authentication is set to password and click **Continue**.



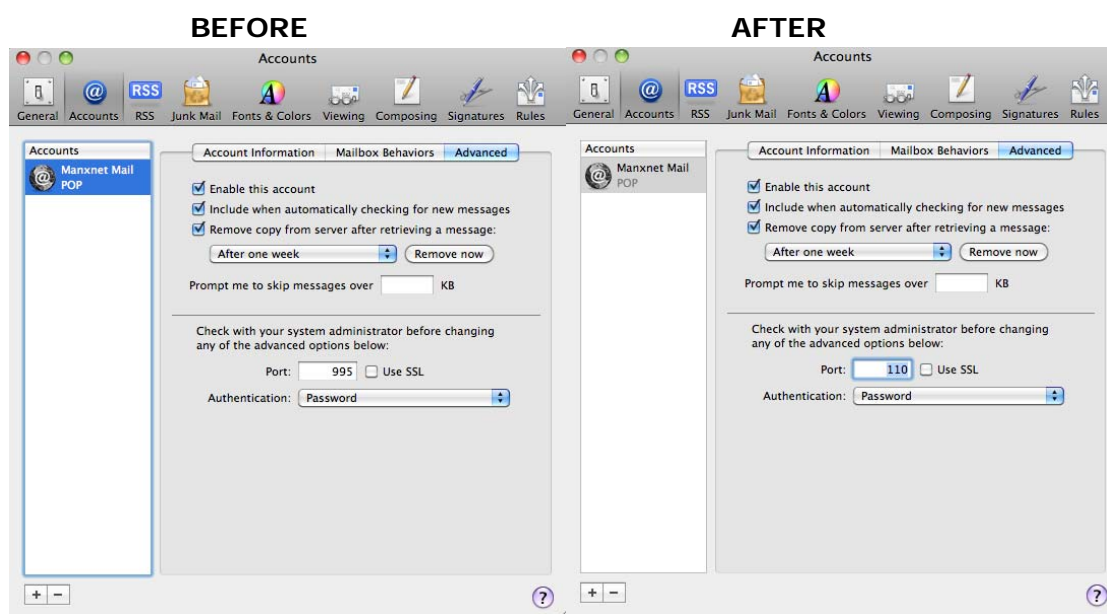
The **Account Summary** screen reviews all the information that we have just entered. If the information is correct, click Create and proceed to the next section.

## Setting the correct POP port number

This procedure solves a problem whereby Apple Mail on Max OS X Snow Leopard attempts to connect to the POP3 server using SSL security, and the setting to disable this does not change the port number correctly.

You must follow this procedure to correctly set up your program for Manxnet Mail

- Go to the **Mail** menu and select **Preferences**
- Click on the **Accounts** tab, and select your new **Manxnet Mail POP** account.
- Select the **Advanced** tab toward the right and change the port number that is listed as **995** to **110**. The below images show the differences before and after



- Once completed, close the dialog, ensuring that **Save** is clicked when prompted.



## Accessing your email and saving the passwords

There are two locations to place the password, one for inbound mail and one for outbound.

## Setting the inbound password

- To access your email, click on the Get mail icon.



- A dialog will appear asking for your password alike the below:



- Enter in your mail account password. It is advised that the password be saved in your Mac OS X user keychain for future use (so that it need not be entered each time). Tick the box if you would the password to be saved to your keychain and click OK.
- Your mail should now download

## Setting the outbound password

- The next time that you send a message, a similar dialog will appear asking for a password to connect to the outgoing mail server.
- As per inbound email, enter in the same password you used, and save this to keychain if desired.
  
- Congratulations! You have now set up your Manxnet email.

If you have any problems with this procedure or require further information please visit our website located at <http://www.manxtelecom.com/support> or contact our Service Centre on **624 624** at any time.