

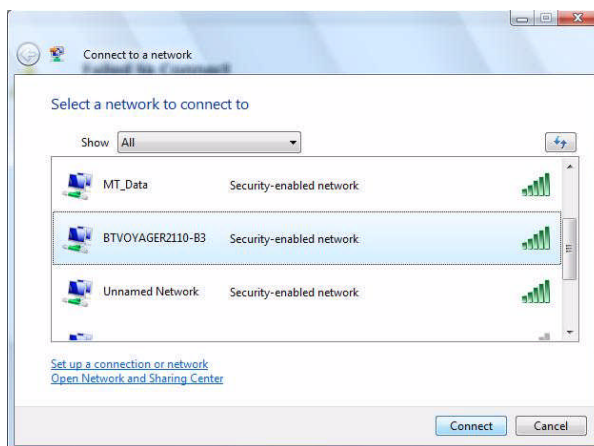
Configuration of BT Voyager 2110 Wireless Router

If you are having problems with configuring your Wireless router you should consult the documentation that came with your router, contact the manufacturer or request a Broadband Made Easy engineer from our Sales department on **624624**.

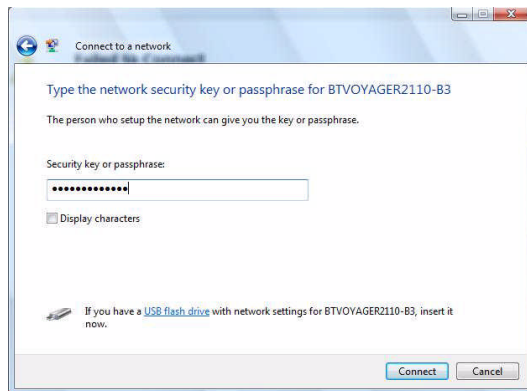
If you continue to have problems this procedure can be used as a manual setup guide to assist you with the installation. **You should follow your manufacturer installation instructions in the first instance.**

These instructions were created using Windows Vista Home Edition

- Plug a filter in to every telephone socket that is in use in your property by unplugging the telephone, plugging the filter in and re-connecting your telephone to the filter.
 - Plug the power supply and the grey ADSL Line Cord in to the respective sockets on the rear of the router – marked **Power** and **DSL** respectively.
 - Plug the power supply in to a mains socket and ensure the socket is switched on, then plug the other end of the Line Cord in to the DSL socket of the nearest filter.
 - Press the Power Switch on the back of the router to switch it on; the power light will come on.
 - Wait for up to one minute until the **DSL** light on the front of the router stops flashing and is solid green.
-
- Click the **Start Button** and click **Connect To** (Windows XP users should click **Start, Settings** and then **Connect To**).



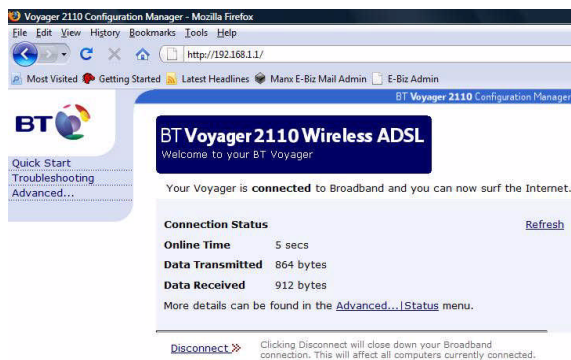
- You will now see the Network Connection screen. Highlight the **BTVOYAGER2110** network and click **Connect**.



- You will now see the above screen to enter the **Wireless Security Key** for your router and click **Connect**.
- Now open your Internet Browser and visit <http://192.168.1.1>



- Enter your Broadband Username and Password in the relevant fields and click **Connect**



- You are now connected to the Internet.

If you continue to have problems configuring your router you can contact our Sales department on 624624 to arrange a Broadband Made Easy engineer who can configure your Manx Telecom purchased router for you.

Useful Links:

Netgear DG834G :

http://www.voyager.bt.com/wireless_devices/voyager_2110/product_info.htm

Manx Telecom Support : <http://www.manxtelecom.com/support>

Stay Safe Online : <http://www.staysafeonline.org/>