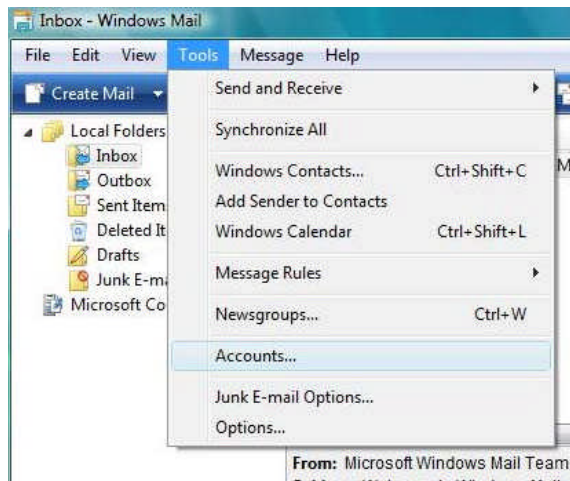


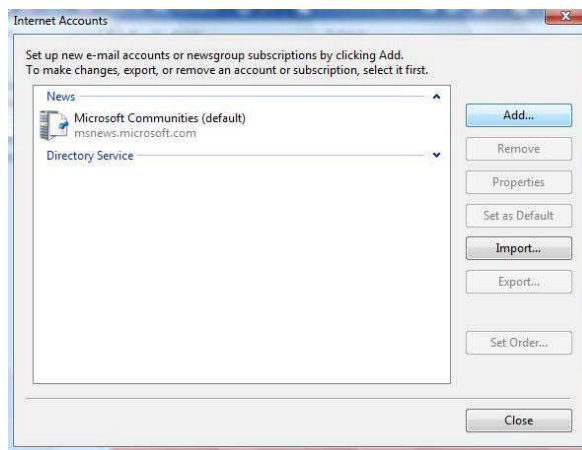
Setting up Manxnet Mail Plus for Windows Mail (Vista)

This procedure will assist you in setting up your Manxnet Mail address with Windows Mail on Windows Vista

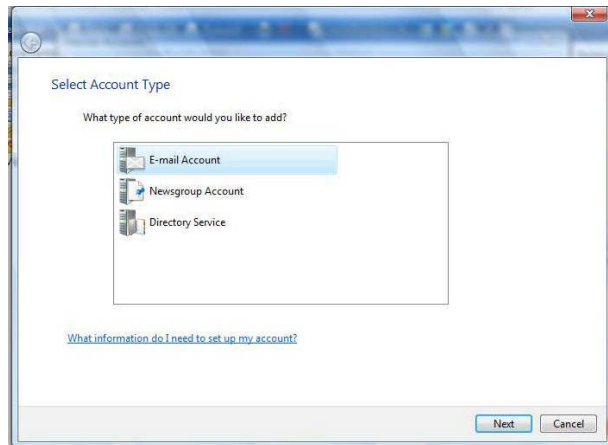
- Open your Mail program by click the Start button and selecting **Mail**



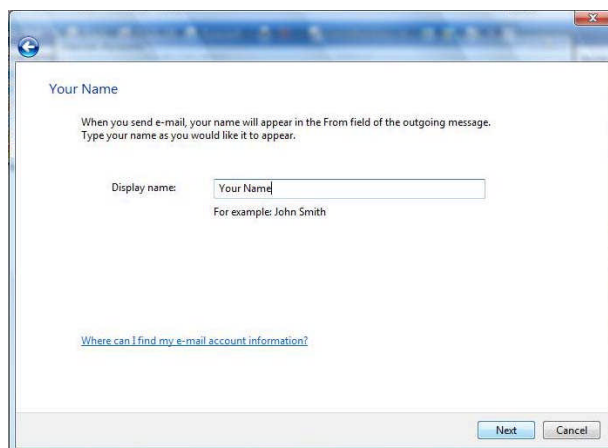
- Once the program is open click **Tools** and **Accounts**



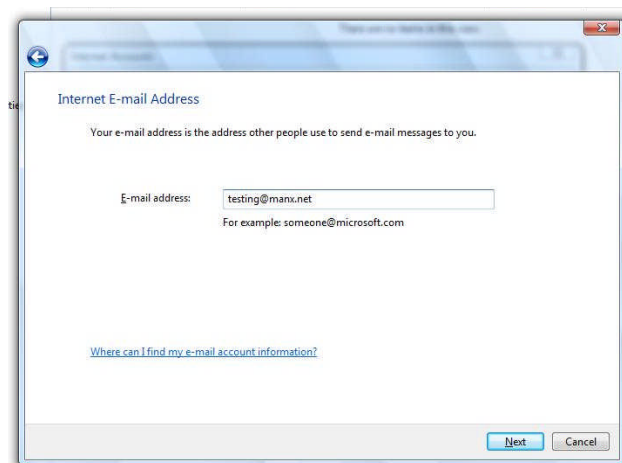
- The **Internet Accounts** screen details the accounts that Windows Mail can use, to add your e-mail account click the **Add** button.



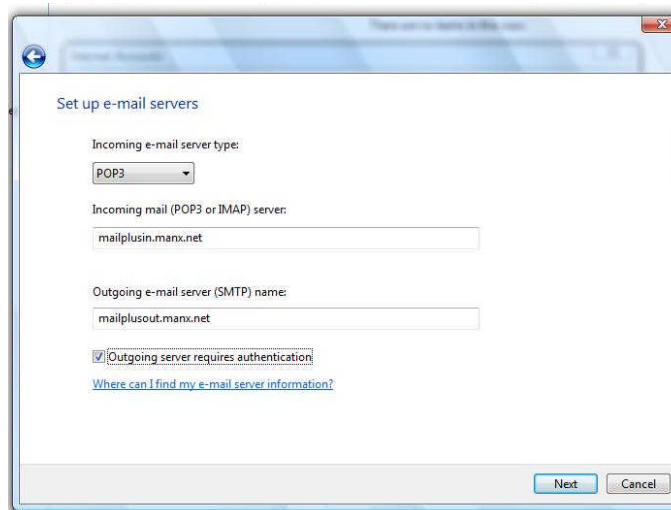
- As we are setting up an e-mail account, select **E-Mail Account** and click **Next**



- In the **Display Name** field enter your name as you would like it to be displayed to people you send e-mails to and click **Enter**

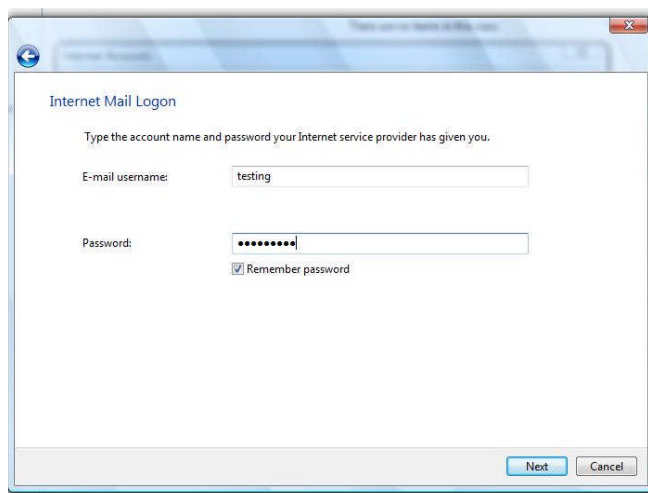


- Enter your full E-Mail address in this field and click **Enter**

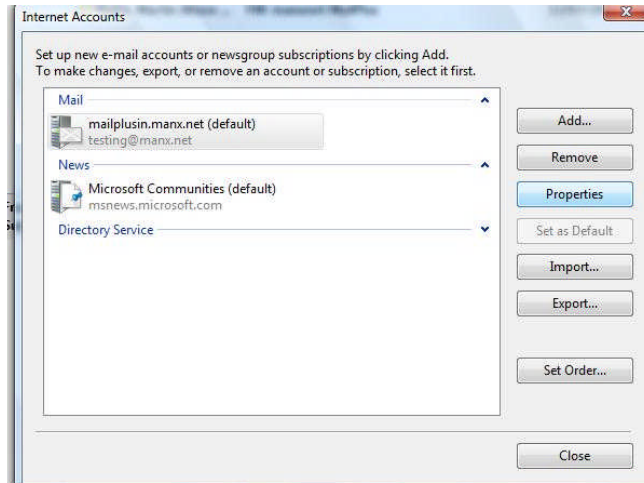


E-Mail server addresses tell your mail program the address of the servers that send and receive your Manxnet Mail; to set up your **e-mail servers**, enter the information as shown above:

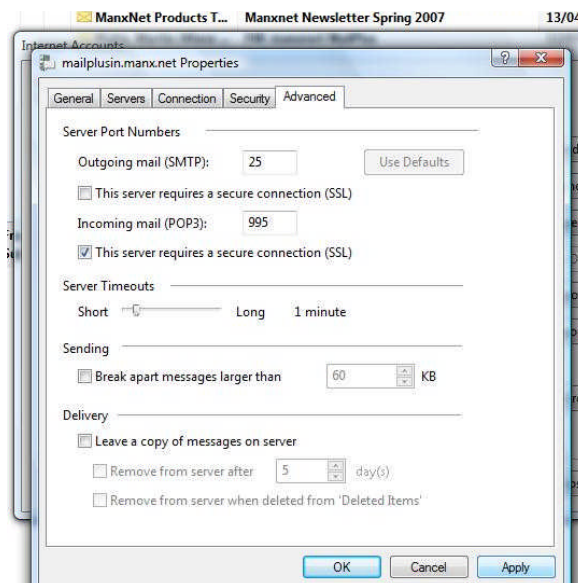
- Incoming e-mail server type: **POP3**
- Incoming mail (POP3 or IMAP) server: **mailplusin.manx.net**
- Outgoing e-mail server (SMTP) name: **mailplusout.manx.net**
- Tick the box **Outgoing server requires authentication**
- Click **Next**



- Your **E-mail username** should already be filled in, the username is the first part of your e-mail address, without the @manx.net; our e-mail address is testing@manx.net so the username is testing. Enter your e-mail password and tick the **Remember password** box. Click **Next** and you will be shown a confirmation screen that you have successfully created this account, tick the box **Do not download my e-mail at this time** and click **Finish**.



- You will now see your e-mail account listed under **Mail**. Click your account once so it is highlighted and then click **Properties**.



- Click the **Advanced** tab and in the first section called **Server Port Numbers**, under the heading **Incoming mail (POP3)**: tick the box marked **This server requires a secure connection (SSL)**. When you tick this the number in the box next to **Incoming Mail (POP3)**: will change to 995. Once your screen looks like the above click **OK** and then **Close** on the **Internet Accounts** box.

If you have any problems with this procedure or require further information please visit our website located at <http://www.manxtelecom.com/support> or contact our Service Centre on **624 624** at any time.