



Netgear Live Parental Controls User Configuration

This document has been created as a reference to assist you with the configuration of the Netgear Live Parental Controls. Powered by OpenDNS, Live Parental Controls allow you to protect your family from unsuitable content.

There is no substitute for supervised access to the Internet but this is not always possible. Netgear Live Parental Controls give you the peace of mind that there are easy to use solutions to help protect your loved ones.

All at no extra cost.

Detailed support information can be found at:

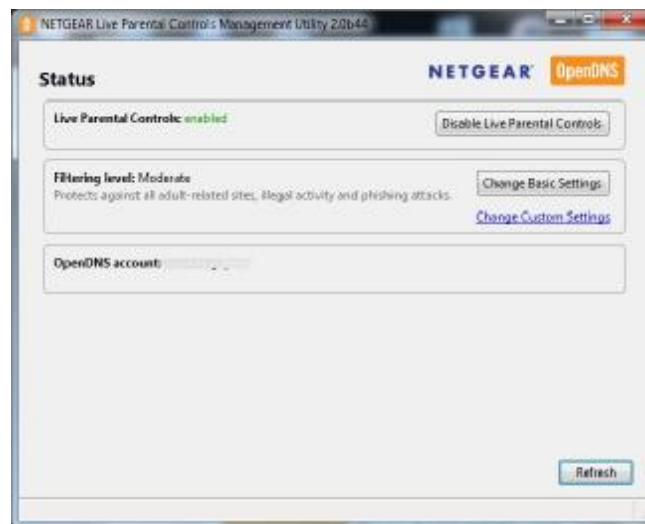
<http://netgear.opendns.com/support>

Be aware that Parental Controls affect all devices including consoles and iPods.

Parental Controls User Configuration

Now that Parental Controls are installed on your router you will have a program on your computer called **Management Utility** – this is the program used to configure your Parental Controls, on a Windows based computer this is located under **Programs** in the **Start Menu** in a folder called **NETGEAR Live Parental Controls**.

When you open this program you are prompted to enter the Admin Password for your router, by default this is password



- In the **Parental Controls Management Utility** you can disable/enable your filtering, change the filtering level and you are also shown the OpenDNS Account that you are logged in to.
- Clicking **Disable Live Parental Controls** will stop all filtering on your network so you will not be protected.
- By clicking **Change Basic Settings** you are taken to the main filtering selection screen you saw at the end of the installation process earlier
- Clicking **Change Custom Settings** allows you to further configure your protection, which we will look at now.



- The Default Settings screen allows you to configure various options with your Parental Controls.

A: Filtering Level (Main portion of page)

- In this section you can select the standard Filtering Level you require, view what this level actually filters and allows you to customise your filtering.

B: Adding a Time Block (Left side of page)

- By adding a Time Block you can automatically change the level of filtering at specified times each day. For example, when the children are at school or after they have gone to bed you can reduce the level of filtering.

C: Adding a Bypass Account (Upper right of page)

- A Bypass Account is an application you install that removes the filtering on the computer the bypass is installed on.

D: Account Settings (Top-right of page)

- In the Account Settings screen you can change the time zone your router defaults to so you know your Time Blocks will work correctly, ensure networked storage drives or printers are not affected by the Parental Control and you can also specify websites to be Blacklisted (always blocked) or Whitelisted (always allowed).



A: Filtering Level

Modify default filtering level
Choose a filtering level for all times that are *not* defined in a [custom time block](#).

Filtering Level **A**

- High** Protects against all adult-related sites, illegal activity, social networking sites, video sharing sites, and general time-wasters. **27** out of 56 categories in this group - [View](#) - [Customize](#)
- Moderate** Protects against all adult-related sites and illegal activity. **14** out of 56 categories in this group - [View](#) - [Customize](#)
- Low** Protects against pornography and phishing. **5** out of 56 categories in this group - [View](#) - [Customize](#)
- Minimal** Protects against phishing attacks. **1** out of 56 categories in this group - [View](#) - [Customize](#)
- None** Nothing blocked.
- Custom** Only categories you select are blocked.

You can select the default Filtering Level by clicking next to the default name. These are pre-set levels of protection that will be suitable for most users.

If you want to see what each Filtering Level blocks click **View** and if you want to manually change this setting click **Customize**

- Moderate** Protects against all adult-related sites and illegal activity. **14** out of 56 categories in this group - [View](#) - [Customize](#)
- Low**
- Minimal**
- None**
- Custom**

Adware [x]

Sites that distribute applications which display advertisements without user's knowledge or choice. Does NOT include sites which serve advertising.

Alcohol

Sites about alcohol use, commercial and otherwise.

Dating

Sites for meeting other people.

Drugs

Sites about illegal or recreational drug use.

A: (i) – By clicking the **View** link next to each default setting you are shown a list of the types of sites that are blocked by the Parental Controls for that setting and a short description of what the definition means.



Moderate Protects against all adult-related sites and illegal activity.
14 out of 56 categories in this group - [View](#) - [Customize](#)

Low Protects against pornography and phishing.
5 out of 56 categories in this group - [View](#) - [Customize](#)

Minimal Protects against phishing attacks.
1 out of 56 categories in this group - [View](#) - [Customize](#)

None Nothing blocked.

Custom Only categories you select are blocked.

<input type="checkbox"/> Academic Fraud	<input type="checkbox"/> Adult Themes	<input checked="" type="checkbox"/> Adware
<input checked="" type="checkbox"/> Alcohol	<input type="checkbox"/> Auctions	<input type="checkbox"/> Automotive
<input type="checkbox"/> Blogs	<input type="checkbox"/> Business Services	<input type="checkbox"/> Chat
<input type="checkbox"/> Classifieds	<input checked="" type="checkbox"/> Dating	<input checked="" type="checkbox"/> Drugs
<input type="checkbox"/> Commerce/Shopping	<input type="checkbox"/> Educational Institutions	<input type="checkbox"/> File storage
<input type="checkbox"/> Financial Institutions	<input type="checkbox"/> Forums/Message boards	<input checked="" type="checkbox"/> Gambling
<input type="checkbox"/> Games	<input type="checkbox"/> Government	<input checked="" type="checkbox"/> Hate/Discrimination
<input type="checkbox"/> Health	<input type="checkbox"/> Humor	<input type="checkbox"/> Instant messaging
<input type="checkbox"/> Jobs/Employment	<input checked="" type="checkbox"/> Lingerie/Bikini	<input type="checkbox"/> Movies
<input type="checkbox"/> Music	<input type="checkbox"/> News/Media	<input type="checkbox"/> Non-profits
<input checked="" type="checkbox"/> Nudity	<input type="checkbox"/> PDF/File sharing	<input type="checkbox"/> Parked Domains
<input type="checkbox"/> Photo sharing	<input type="checkbox"/> Podcasts	<input type="checkbox"/> Politics
<input checked="" type="checkbox"/> Pornography	<input type="checkbox"/> Portals	<input checked="" type="checkbox"/> Proxy/Anonymizer
<input type="checkbox"/> Radio	<input type="checkbox"/> Religious	<input type="checkbox"/> Research/Reference
<input type="checkbox"/> Search engines	<input checked="" type="checkbox"/> Sexuality	<input type="checkbox"/> Social networking
<input type="checkbox"/> Software/Technology	<input type="checkbox"/> Sports	<input checked="" type="checkbox"/> Tasteful
<input type="checkbox"/> Television	<input type="checkbox"/> Tobacco	<input type="checkbox"/> Travel
<input type="checkbox"/> Video sharing	<input type="checkbox"/> Visual search engines	<input checked="" type="checkbox"/> Weapons
<input type="checkbox"/> Webmail	<input checked="" type="checkbox"/> Phishing Protection	

Note: **Highlighted** categories are currently being blocked.

A: (ii) – By clicking the **Customize** link your Filtering Level automatically changes to **Custom** and you are able to manually select categories to filter or allow as you choose.

- When you have selected your preferred level of protection options. click **Save Filtering Level**.



B: Adding a Time Block

Live Parental Controls Want to bypass your default settings?
[Add a bypass account](#)

Default settings

12 midnight 6 AM 12 noon 6 PM

Filtering Color Key: High Moderate Low Minimal None Custom

All times (default)
Add a time block

Add a time block

Customize settings for different times of the day by adding a time block below.

1. Define a **time range** (e.g. 4 PM to 11 PM)
2. Choose a **filtering level** (High, Moderate, Low, Minimal, None, or Custom)

You can always change or delete these filtering rules by selecting the time block from the menu on the left.

Time Range

12 :00 AM to 12 :00 AM

Filtering Level

- High** Protects against all adult-related sites, illegal activity, social networking sites, video sharing sites, and general time-wasters. 27 out of 36 categories in this group - [View](#) - [Customize](#)
- Moderate** Protects against all adult-related sites and illegal activity. 14 out of 36 categories in this group - [View](#) - [Customize](#)
- Low** Protects against pornography and phishing. 3 out of 36 categories in this group - [View](#) - [Customize](#)
- Minimal** Protects against phishing attacks. 1 out of 36 categories in this group - [View](#) - [Customize](#)
- None** Nothing blocked.
- Custom** Only categories you select are blocked.

When creating a Time Block there are two things you need to decide:

- When the Time Block is to activate/deactivate
- What level of filtering is to be enabled with the Time Block

There are two ways you can think about your Time Blocks in relation to your standard level of security.

Option 1:

You can have a high level of protection with your **Default Filtering** level at all times and use Time Blocks to lower the levels of protection to the hours you know the children won't be using the Internet. Such as when they're at school or they have gone to bed.

Option 2:

You can have a low level of protection for the majority of the day, such as when the children are in school or in bed, and use Time Blocks to enable greater protection when the children are allowed to use the Internet.

For this tutorial we will use Option 1 and use Time Blocks to lower the level of protection. This assumes you have already set your Filtering Level (we have used **Moderate**)



Time Range

10 :00 AM to 2 :00 PM

Filtering Level

- High
Protects against adult-related sites, illegal activity, social networking, and video sharing sites, and general time-wasters.
27 out of 56 categories in this group - [View](#) - [Customize](#)
- Moderate
Protects against adult-related sites and illegal activity.
14 out of 56 categories in this group - [View](#) - [Customize](#)
- Low
Protects against pornography and phishing.
5 out of 56 categories in this group - [View](#) - [Customize](#)

- From the **Default Settings** screen click **Add A Time Block**.
- In the Time Range section select a start time and an end time for the Time Block to be active. Once your 'hour' drop down menu is selected you can use the 'minute' drop down menu to select, in 15 minute intervals, whether this hour is AM or PM.
- Then select the Filtering Level you wish to be activated during this Time Block and then click **Add Time Block**



- You will now see the timeline at the top of the page show your activated Time Block. You can create more Time Blocks in the same way.

Please note: When creating Time Blocks be aware these are activated every day of the week, regardless of whether it is a school day or not.



C: Adding a Bypass Account

NETGEAR Signed in: manxtelecom@manxtelecom.com | Account Settings | Support | Sign out

Parental Controls > Bypass accounts

How to bypass your default settings
Adults on your network may wish to browse the Internet without being blocked by your default settings. It's simple to set up.

- 1 Download the user utility**
Each user who wants to bypass your default settings must be logged into this utility while browsing the Web. You may install this on multiple computers (requires Windows).
- 2 Add a bypass account**
Choose a username and password that will be used to login to the software you downloaded in step one.
- 3 Set filtering level for the bypass account**
Make sure to apply a filtering level for the bypass account that is lower than your default setting.

If you have a personal computer that the children do not use you may wish to add a Bypass Account to this computer so a different level of Parental Control is applied at all times.

Bypass accounts can only be installed on Windows computers.

- To install this click the **Add a bypass account** link in the top right on the page.
- There are three stages we must go through:
 1. Download the user utility
 2. Add a Bypass Account
 3. Set the Filtering Level for the Bypass Account and log in



- Click the **Download the user utility** link. You will be prompted to save the Netgear User Utility file, click **Save**
- Once the file has been downloaded we now need to Add a bypass account for the Utility to use. Click **Add a bypass account**.

Parental Controls > Bypass accounts > Add bypass account

You're creating a new bypass account. Next, set custom filtering levels for the account in the Live Parental Controls settings panel by selecting the username at the top.

Username
ManxTelecom (e.g. Dad)

Password

Verify Password

or

- Enter a username and password for the bypass account, verify the password and click **Add Account**

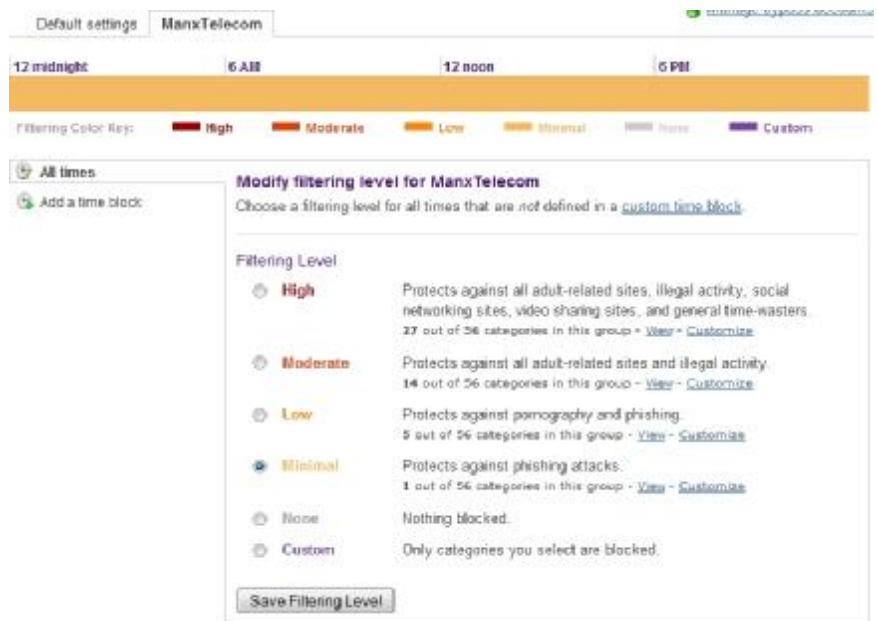


- Your new user account is now added. We now need to set the level of protection for this bypass account, click **Manage bypass account**

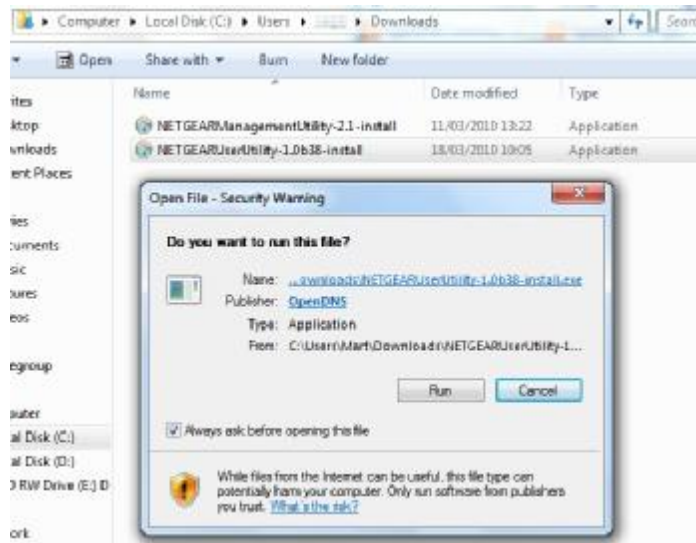
Parental Controls > Bypass accounts



- Click the **Edit Filtering** icon



- Most people require bypass accounts so their computer is not subject to the protection of the Parental Controls. Because of this the default **Filtering Level** is **Minimal** which only blocks access to known phishing attacks. This is the recommended setting.
- Once you have selected your preferred Filtering Levels click **Save Filtering Level**
- Next, we need to install the Bypass application. Browse to the location of the downloaded Utility and double click the install file.



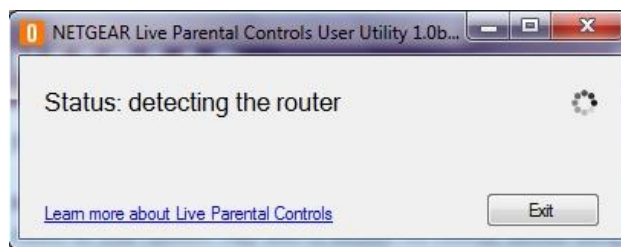
- You may see a security warning asking you if you want to run this file. Click **Run**
- If you are running a Windows computer you may have another security warning asking if you want to allow Netgear Parental Controls User Utility to make changes to the computer. Click **Yes**.



- To start the installation process click **Install**



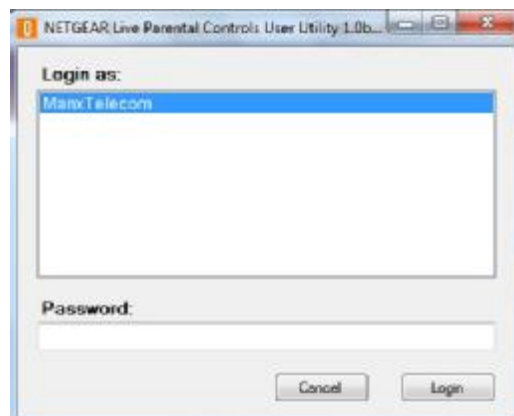
- The program will now install and you will see a window advising that the program has been installed. With the **Launch NETGEAR Live Parental Controls User Utility** box ticked, click **Finish**



- The Utility will now scan for your router.

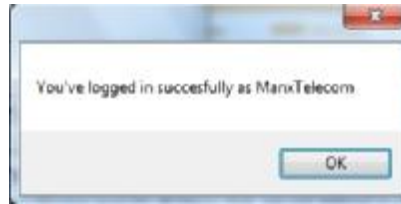


- Once found, you are asked to enter your router's username and password and click **OK**. By default the password is **password**.





- You can now enter the password for your bypass account and click **Login**



- You are now logged in with your bypass account. You need to log in to the Netgear User Utility, which is located under the **Start Button** and **Programs**, each time you start your computer.

You should ensure that there is suitable supervised guidance when children are using a computer with a bypass account as your filtering will not apply.



Account Settings

In the Account Settings section you are able to set the International Time Zone, Typo Exceptions and you can also Blacklist and Whitelist websites you always want blocked or available.

Time Zones

Parental Controls > Account Settings

[Time Zone](#) [Typo Exceptions](#) [Blacklist/Whitelist](#)

Username

Email

Time Zone Europe, London ([change](#))

[Back to Parental Controls](#)

- To check your time zone is set correctly click **Account Settings** and then the **Time Zone** tab. If your time zone is not correct, click **Change**

Parental Controls > Account Settings > Time Zone Setup

Your time zone is currently set to Europe, London.

Find your time zone

City

State/Region

Country

or [cancel](#)

- To find the correct time zone enter your town/city and country and click **Show Time Zones**.

Parental Controls > Account Settings > Time Zone Setup

Select your time zone

Time Zone	Local Time	City	Region	Country
<input type="radio"/> Europe, London	11:36 AM	Douglas	Scotland	United Kingdom
<input checked="" type="radio"/> Europe, London	11:36 AM	Douglas	Isle of Man	United Kingdom

or [cancel](#)

Don't see your time zone listed? [Find more...](#)

- You will now be shown the matching time zones for your query. Select the correct option and click **Save Time Zone**



Typo Exceptions

If you have networked printers or storage devices you need to add these to the exceptions list for the Parental Controls so they are always accessible regardless of the level of protection you have enabled.

Different versions of Windows will differ in the names involved but you should be able to find your networked devices in the **Start Button** and under **Computer** or **My Computer**, then **Network** or **Networking**. Consult your Windows help files if needed.

A screenshot of the "Parental Controls > Account Settings" web interface. The "Typo Exceptions" tab is selected. Under "Add a Typo Exception", there is a text input field and an "Add this exception" button. Below this, examples are listed: "printer1, vpn.mydomain.com". Under "Your Typo Exceptions", there is a list of two items: "printer1" and "READYNAS-DUD-1", each with a checkbox. A "Delete" button is located at the bottom of the list.

Parental Controls > Account Settings

Time Zone | **Typo Exceptions** | Blacklist/Whitelist

Add a Typo Exception

Users with local network names such as printers, shared directories, home servers, and NAS devices should add an exception for each device. VPN users should add the domain they VPN into as an exception. This will make sure your local network and VPN connection is unaffected by Live Parental Controls.

Examples: printer1, vpn.mydomain.com

Your Typo Exceptions

printer1

READYNAS-DUD-1

- Once you have found your networking devices add the name to the Typo Exceptions field and click **Add this exceptions**



Blacklist/Whitelist

Blacklisting and Whitelisting websites is an ideal way of managing your Parental Controls if you find a site is or isn't available through your Filtering Level.

The screenshot shows the "Parental Controls > Account Settings" interface. At the top, there are three tabs: "Time Zone", "Type Exceptions", and "Blacklist/Whitelist", with the latter being selected. Below the tabs is a green banner that says "Domain added". Underneath, the section is titled "Blacklist/Whitelist" and contains the text: "If there are domains you want to make sure are always blocked (blacklisted) or always allowed (whitelisted) regardless of any filtering rules you've set, you can add them here." There is a dropdown menu labeled "Always block" with a downward arrow, followed by an empty text input field and a button labeled "Add this domain". Below this, there are two sections: "Your Blacklist (domains that are always blocked)" and "Your Whitelist (domains that are never blocked)". The Blacklist section contains three entries: "bebo.com", "facebook.com", and "youtube.com", each with a checkbox. The Whitelist section contains three entries: "directory.im", "manx.net", and "manxtelecom.com", each with a checkbox. At the bottom left of the list area is a "Delete" button.

- Simply add the domain (the website address) and select whether you want to block or allow this and click add this domain.

Further help and advice for the Parental Controls can be found at <http://netgear.opendns.com/support/>